



## **Strainers**

**Basket Strainers - Model 5300**

**"Y" Strainers - Model 5200**

**Suction Strainers - Model 5400**

ASME B 16.34 / ASME Sec. VIII Div. 1

Size - 2" to 24" ( 50mm to 600mm)

Rating - Class 150 to Class 2500

Fabricated Design

Cast Steel Design

## **Contents:**

<b>Company Overview</b>	<b>01</b>
<b>Quality Policy</b>	<b>02</b>
<b>Features of Basket Strainers</b>	<b>03</b>
<b>General Drawing of Basket Strainers</b>	<b>04</b>
<b>Material of Construction</b>	<b>04</b>
<b>Dimensions of Basket Strainers</b>	<b>05</b>
<b>Features of Y-Type Strainers</b>	<b>06</b>
<b>General Drawing of Y-Type Strainers</b>	<b>07</b>
<b>Material of Construction for Y - Strainers</b>	<b>07</b>
<b>Dimensions of Y - Type Strainers</b>	<b>08</b>
<b>General Drawing of Suction Strainers</b>	<b>09</b>
<b>Material of Const. of Suction Strainers</b>	<b>09</b>
<b>Dimensions of Suction Strainers</b>	<b>10</b>

**# Basket Strainers - Model 5300**

**# Y - Type Strainer - Model 5200**

**# Suction Strainers - Model 5400**

## Company Overview

“INVACO” (Industrial Valve Company) founded and promoted by the technocrats having experience of 18 years in National and International valve industry. INVACO PRIVATE LIMITED (Industrial Valve Company) is registered experience company in Design, Development, Fabrication & Manufacturing of Industrial Valves. Our mission is to produce high quality and reliable Valves to our national & international clients / customers. Our proactive approach to technical issues enables to understand and implement cost-effective solutions to our valuable customers.

“INVACO” (Industrial Valve Company) committed to excellence by manufacturing top quality valves to exceed customer’s needs with low cost, on-time delivery & providing finest service in industry. “INVACO” manufacture Ball valves (Floating & Trunnion Mounted), Butterfly Valves (Damper, Sleeved, Double offset & Triple Offset), Gate Valves, Globe Valves , Check Valves, Strainers, Flap Valves, Dismantling Joints, Flange Adaptor, Flange Couplings & Sluice Gate / Penstock for Oil & Gas, Petrochemicals, Refineries, Power Plants, Water Treatment Plants, Chemical, Paper & Pulp, Sugar, Steel, Pharma, Pipeline Transmission and other process industries.

“INVACO” (Industrial Valve Company) is specialized in design, manufacturing & testing of CAST & FORGED Steel T - Type or Basket and Y-Type Strainers. Strainers are designed as per ASME B16.34, ASME Sec VIII Div. 1, ASME B31.1, ASME B31.3, ASME B31.4 and follows ISO 9001:2015 Quality Management Systems. INVACO, manufacture Strainers from 2” to 48” (50mm to 1200mm) with pressure range from Class 150 to Class 2500 and equivalent EN pressure ratings. Strainers manufactured from FORGED materials like WCB, WC6, WC9, CA15, LCB, LCC, CF8, CF3, CF3M, CF8, CF8M, Alloy20, 4A, 5A, 6A, Aluminum Bronze, Inconel, Monel, Hast Alloys, and other special materials.



INVACO (Industrial Valve Company) aims to produced a zero defect valves for long life and reliable services. Making continual improvements aims towards to minimize the Total Ownership Cost for valued customers.

This catalog provides basic information of Strainers. Every effort has been made to maintain technical accuracies however INVACO has reserve rights to make any change in design and materials without prior notice.

### Manufacturing Range for Strainers

Strainer	ASME CLASS / Size - in ( mm)						
	150	300	600	800	900	1500	2500
Basket	2” - 48” (50 - 1200 )	2” - 24” (50 - 600 )	2” - 24” (50 - 600 )	Available on Request.			
Y - Type	2” - 30” (50 - 750 )	2” - 30” (50 - 750 )	2” - 24” (50 - 600 )				
Suction	2” - 48” (50 - 1200 )	2” - 48” (50 - 1200 )	2” - 24” (50 - 600 )				



At “INVACO”, we established this comprehensive Quality Management System to implement a strategy of continual improvement and compliance with the requirements of the ISO 9001:2008 Quality Assurance standard and other industrial valves standards by:

**Customer Focused:**

- Make commitments we fully understand and believe we can meet and deliver.
- Meet all commitments to customers on time.
- Satisfy our customer’s needs and exceed their expectations.

**Performance Driven:**

- Verify that our products and services meet customer requirements.
- Monitor benchmark and continuously improve our business, products, and services, organization and employee’s performance.

Entire “INVACO” stick to the spirit and intent of this policy to ensure customer satisfaction is achieved at all respects and times.



## Features of Basket Strainer (Model - 5300)



### Quality Standards:-

Design Standards	- ASME B16.34 / ASME Sec. VIII Div. 1 /ASME B 31.1
Testing Standards	- API 598
End to End Standards	- Maker's Standard
Flange Drilling Standards	- ASME B16.5 / ASME B 16.47 / BS EN 1092.
Butt-Weld	- ASME B 16.25
Valve Marking	- MSS SP 25 / ASME B 16.34
Visual Inspection	- MSS SP 55
Material Testing	- NDE / NACE MR 01- 75 / NACE MR 01- 03 Compliance available.

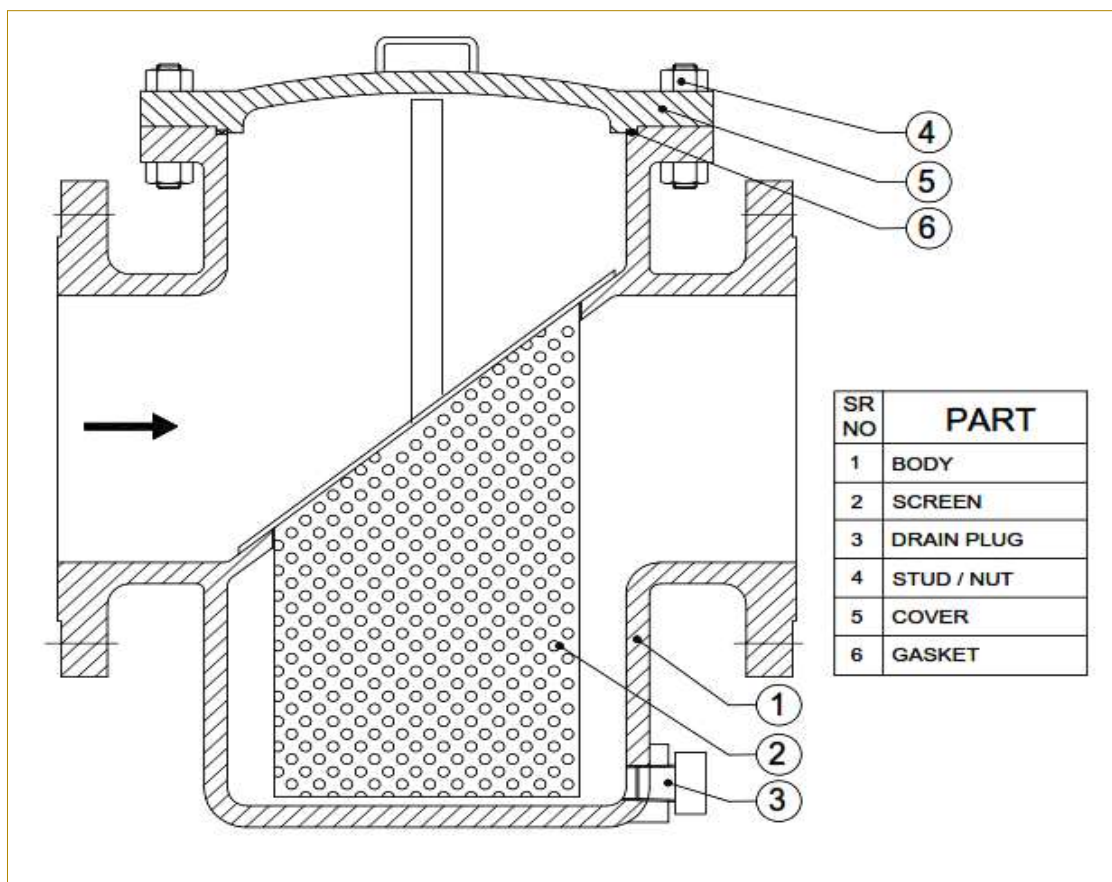
### Key Features:-

- Size :- 2" to 48" ( 50mm to1200mm)
- Casting / Fabricated Design
- Larger Strainer Basket
- Heavy Wall construction
- Rating:- 150# to 1500# & Equiv. DIN Rating
- Flange RF, FF, RTJ, Butt-Weld End
- Wide range of perforations (1/32" to 1/2")
- Drain Connection

**Materials** - Carbon Steel, Low Temperature Carbon Steel, Stainless Steel, Duplex, Super Duplex, Incoloy, Inconel, Monel, Aluminum Bronze, Hastalloy, Titanium and other materials.

**Applications** - Offshore / Onshore Oil & Gas, Chemical, Petrochemical & Allied Process, Power Plant, Water Treatment Plant, Liquefied Natural Gas, Sugar, Paper & Pulp, Steel, Piping & Process Industry

**GA Drawing for Basket Strainer (Model - 5300)**



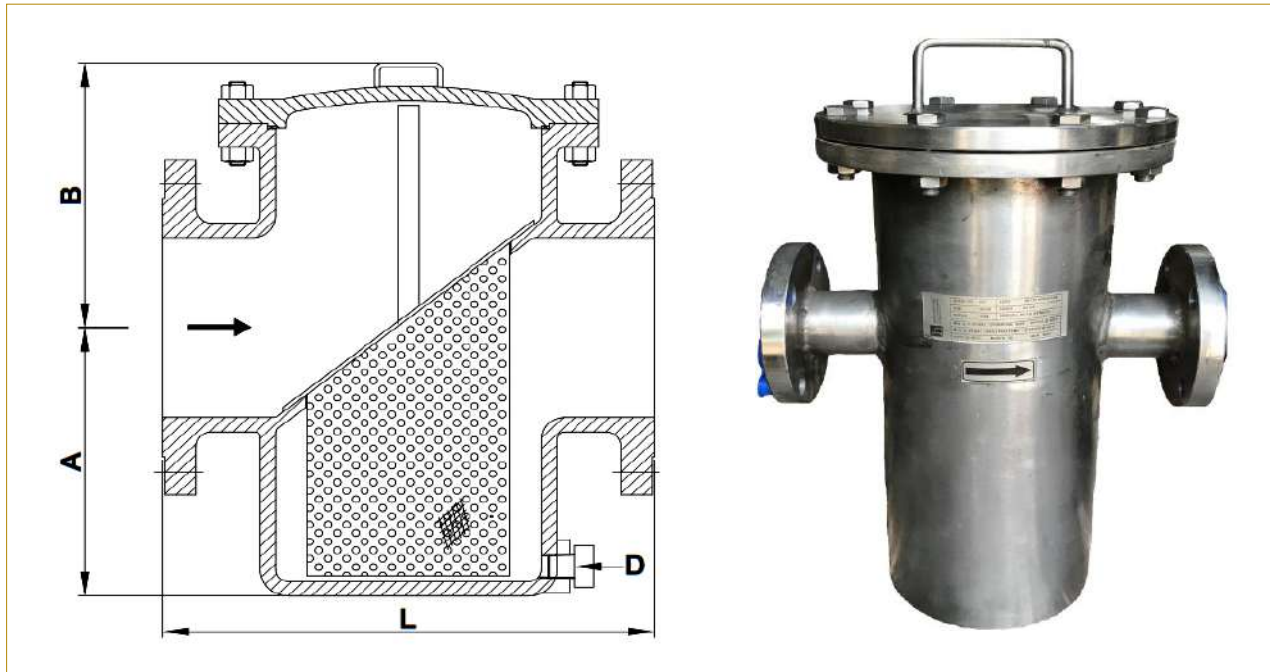
**Material of Construction for Basket Strainer (Model - 5300)**

Bill of Material For Basket Strainer							
Sr. No.	Part	Carbon Steel	Low Temp. Carbon Steel	Stainless Steel	Duplex	Aluminum Bronze	Nickel Alloys
1	Body	A216 Gr WCB	A325 Gr. LCB , LCC	A351 Gr. CF8M, CF8	A890 Gr. 4A, 5A, 6A	C95800, C95500, C63200	A494 Gr.CW6MC, CW12M, M 35-1
2	Screen	SS 304 / SS 316			Duplex	Al-Bz	Monel / Inconel
3	Drain Plug	SS 304 / SS 316			Duplex	Monel / Inconel	Monel / Inconel
4	Stud	A193 Gr B7	A320 Gr L7	A193 Gr B8M	A193 Gr B8M CL2		
	Nut	A194 Gr 2H	A194 Gr 7	A194 Gr 8M	A194 Gr 8M CL2		
5	Cover	A216 Gr WCB	A325 Gr. LCB , LCC	A351 Gr. CF8M, CF8	A890 Gr. 4A, 5A, 6A	C95800, C95500, C63200	A494 Gr.CW6MC, CW12M, M 35-1
6	Gasket	SS (304/316) + Graphite			Duplex + Graphite	Inconel / Monel + Graphite	Inconel / Monel + Graphite

NOTE: \*\* Casting & Fabricated, Customized designs available as per customer requirement.

\*\* "INVACO" reserve rights to change MATERIALS & DESIGN anytime without prior notice.

**Dimensions for Basket Strainers (Model - 5300)**



Size		150#				300#				600#			
		L	A	B	D	L	A	B	D	L	A	B	D
in	mm	mm	mm	mm	NPT	mm	mm	mm	NPT	mm	mm	mm	NPT
2	50	305	296	206	1/2	356	296	254	1/2	467	296	281	1/2
2½	65	333	305	211	1/2	395	305	268	1/2	488	211	306	1/2
3	80	356	331	218	3/4	419	331	280	3/4	508	331	328	3/4
4	100	406	369	251	3/4	458	369	305	3/4	606	369	358	3/4
6	150	480	427	315	1	610	427	356	1	712	427	409	1
8	200	533	478	366	1	632	478	411	1	813	495	460	1
10	250	695	528	427	1	762	528	478	1	864	536	521	1
12	300	735	579	483	1.1/2	864	589	528	1.1/2	966	628	571	1.1/2
14	350	838	631	533	1.1/2	1016	651	579	1.1/2	1118	991	622	1.1/2
16	400	864	685	589	1.1/2	1067	705	635	1.1/2	1219	761	673	1.1/2
18	450	978	731	640	1.1/2	1118	759	691	1.1/2	1351	792	735	1.1/2
20	500	1016	788	691	2	1118	815	742	2	1422	861	786	2
24	600	1143	887	793	2	1270	926	852	2	1572	977	881	2
26	650	1189	935	853	2	<b>Note:-</b> ** Class 900 to 1500 available on request. ** Casting & Fabricated, Customized designs available. ** "INVACO" reserve rights to change DESIGN anytime without notice.							
28	700	1256	991	893	2								
30	750	1367	1046	945	2								
32	800	1597	1097	1006	2								
36	900	1699	1199	1097	2								
40	1000	1727	1311	1199	2								
48	1200	1826	1514	1392	2								

## Feature for Y - Type Strainers (Model - 5200)



### Quality Standards:-

Design Standards	- ASME B16.34 / ASME Sec. VIII Div. 1 /ASME B 31.1
Testing Standards	- API 598
End to End Standards	- Maker's Standard
Flange Drilling Standards	- ASME B16.5 / BS EN 1092.
Butt-Weld	- ASME B 16.25
Valve Marking	- MSS SP 25 / ASME B 16.34
Visual Inspection	- MSS SP 55
Material Testing	- NDE / NACE MR 01- 75 / NACE MR 01- 03 Compliance available.

### Key Features:-

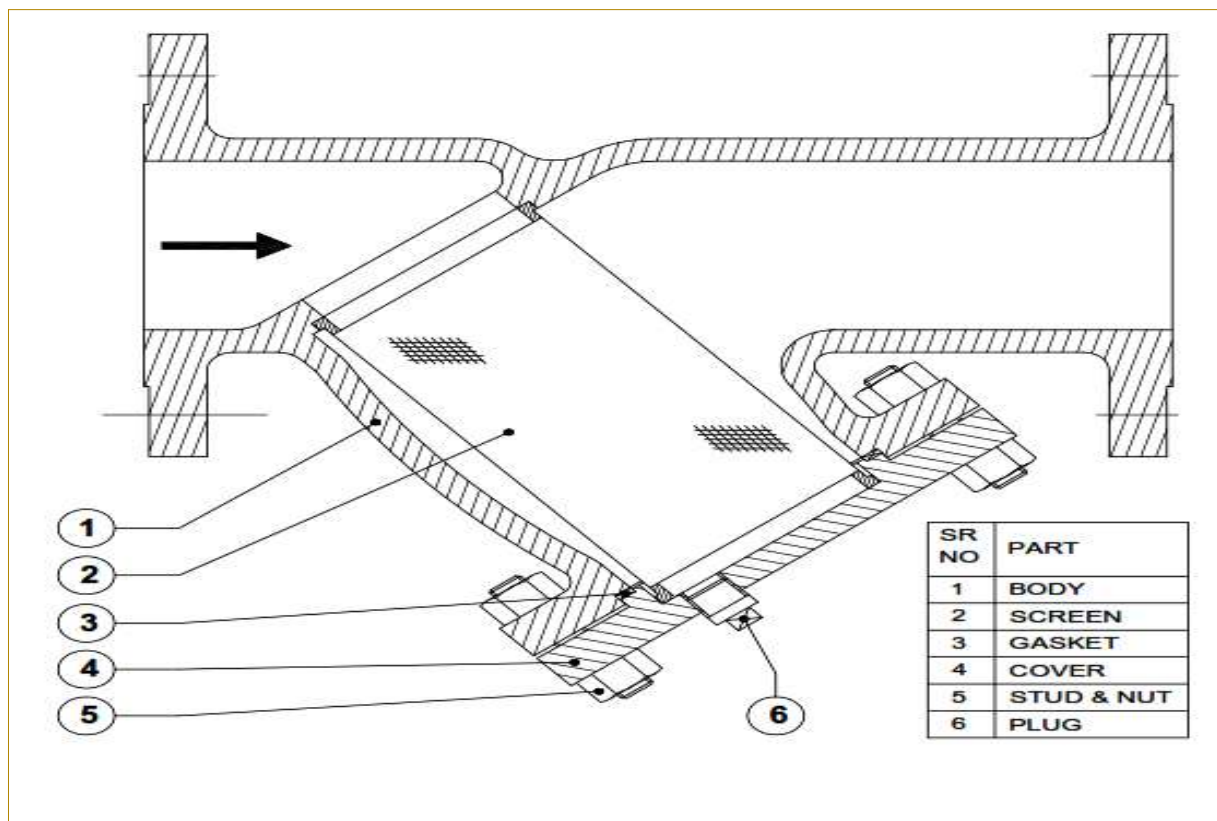
- Size :- 2" to 24" ( 50mm to 600mm)
- Casting / Fabricated Design
- Bolted Cover
- Heavy Wall construction
- Rating:- 150# to 1500# & Equiv. DIN Rating
- Flange RF, FF, RTJ, Butt-Weld End
- Wide range of perforations (1/32" to 1/2")
- Drain Connection

**Materials** - Carbon Steel, Low Temperature Carbon Steel, Stainless Steel, Duplex, Super Duplex, Incoloy, Inconel, Monel, Aluminum Bronze, Hastalloy, Titanium and other materials.

**Applications** - Offshore / Onshore Oil & Gas, Chemical, Petrochemical & Allied Process, Power Plant, Water Treatment Plant, Liquefied Natural Gas, Sugar, Paper & Pulp, Steel, Piping & Process Industry



**GA Drawing for Y - Type (Model - 5200)**

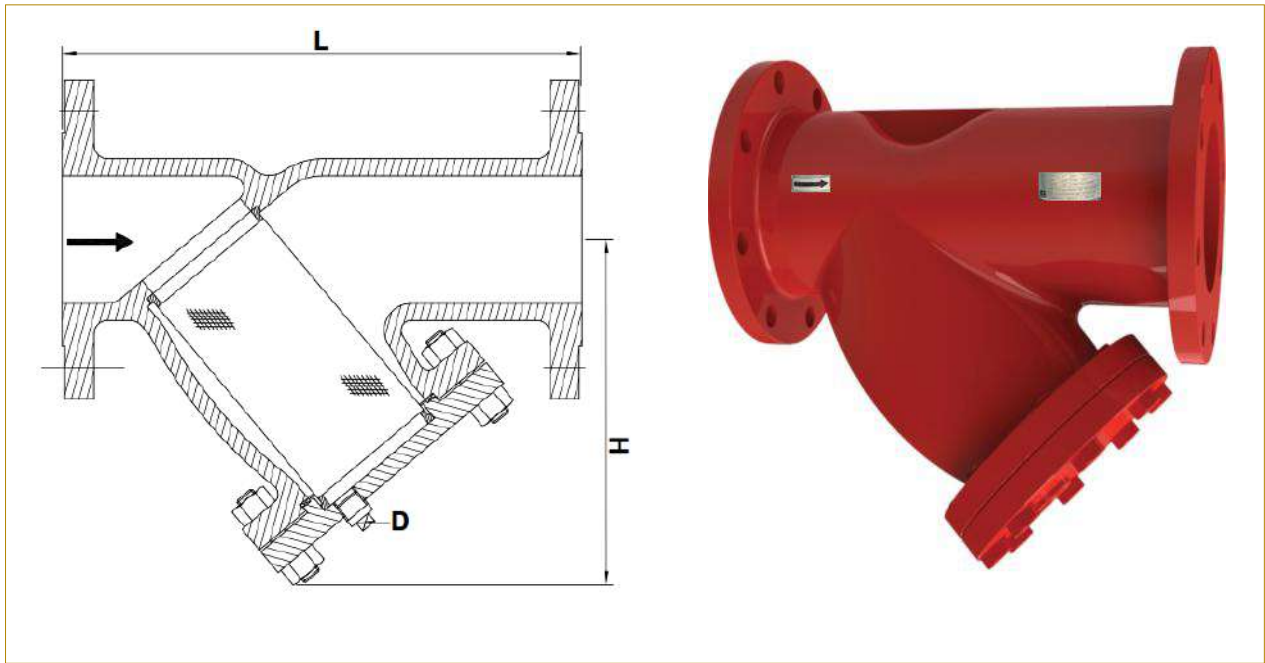


**Material of Construction for Y-Type Strainer (Model - 5200)**

Bill of Material For Y- Type Strainer							
Sr. No.	Part	Carbon Steel	Low Temp. Carbon Steel	Stainless Steel	Duplex	Aluminum Bronze	Nickel Alloys
1	Body	A216 Gr WCB	A325 Gr. LCB , LCC	A351 Gr. CF8M, CF8	A890 Gr. 4A, 5A, 6A	C95800, C95500, C63200	A494 Gr.CW6MC, CW12M, M 35-1
2	Screen	SS 304 / SS 316			Duplex	Al-Bz	Monel / Inconel
3	Gasket	SS (304/316) + Graphite			Duplex + Graphite	Inconel / Monel + Graphite	Inconel / Monel + Graphite
4	Cover	A216 Gr WCB	A325 Gr. LCB , LCC	A351 Gr. CF8M, CF8	.4A, 5A, 6A	C95800, C95500, C63200	A494 Gr.CW6MC, CW12M, M 35-1
5	Stud	A193 Gr B7	A320 Gr L7	A193 Gr B8M	A19 Gr B8M CL2		
	Nut	A194 Gr 2H	A194 Gr 7	A194 Gr 8M	A194 Gr 8M CL2		
6	Drain Plug	SS (304/316)			Duplex	Inconel / Monel	Inconel / Monel

NOTE: \*\* Casting & Fabricated, Customized designs available as per customer requirement.  
 \*\* "INVACO" reserve rights to change MATERIALS & DESIGN anytime without prior notice.

**Dimensions for Y - Type Strainers (Model - 5200)**



Size		150#			300#			600#		
in	mm	L (mm)	H(mm)	D	L(mm)	H(mm)	D	L(mm)	H(mm)	D(mm)
2	50	229	152	¾ NPT	243	159	¾ NPT	282	178	¾ NPT
2½	65	248	178	¾ NPT	267	181	¾ NPT	311	210	¾ NPT
3	80	279	189	¾ NPT	308	192	¾ NPT	351	235	¾ NPT
4	100	313	227	¾ NPT	372	231	¾ NPT	459	318	¾ NPT
6	150	470	337	1NPT	494	342	1NPT	657	508	1NPT
8	200	543	394	1NPT	597	403	1NPT	812	610	1NPT
10	250	663	468	1NPT	699	471	1NPT	951	724	1NPT
12	300	759	660	1½NPT	819	663	1½NPT	1143	756	1½NPT
14	350	895	762	1½NPT	949	783	1½NPT	1283	886	1½NPT
16	400	1076	864	1½NPT	1191	872	1½NPT	1441	908	1½NPT
18	450	1168	916	1½NPT	1297	922	1½NPT	1718	972	1½NPT
20	500	1321	965	2NPT	1388	1071	2NPT	1873	1118	2NPT
24	600	1481	1118	2NPT	1569	1168	2NPT	1972	1	2NPT
30	750	1826	1422	2NPT	1978	1499	2NPT	---	---	---

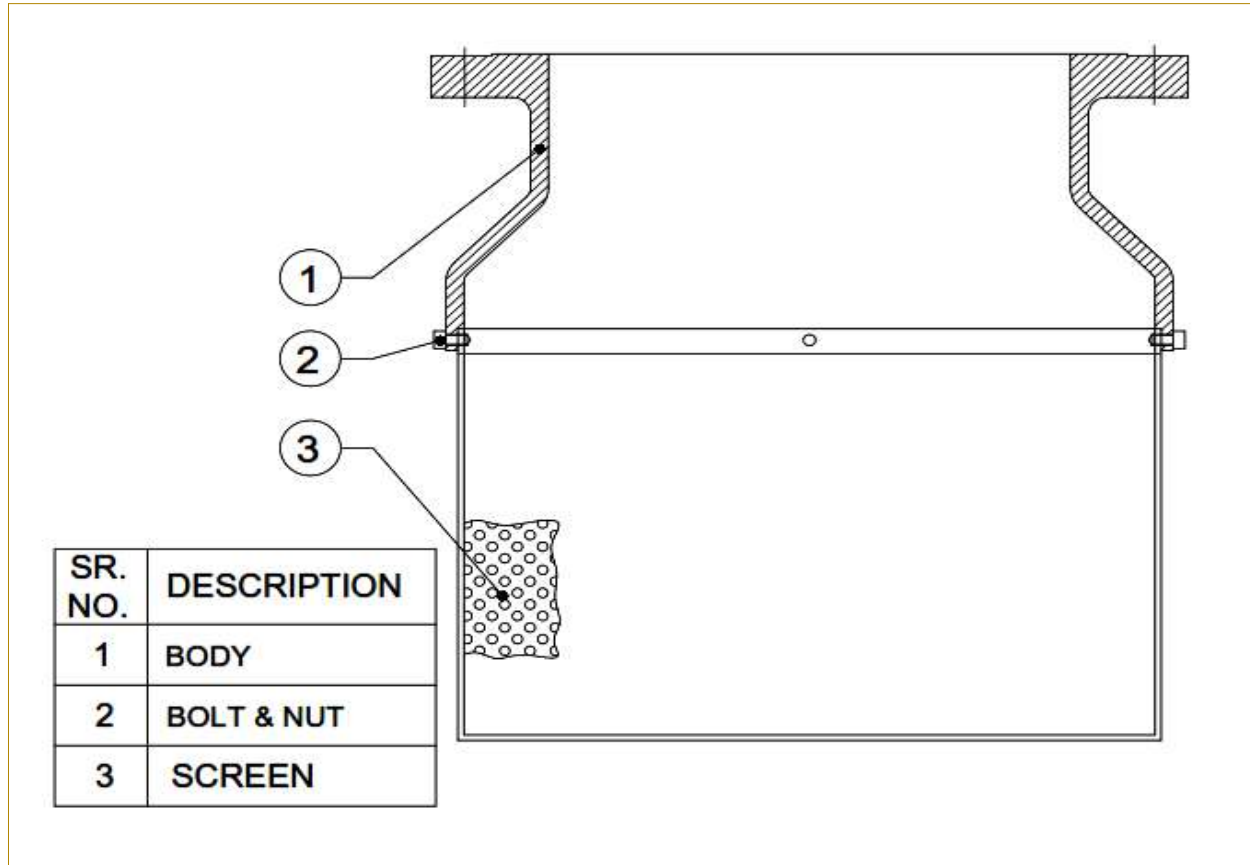
**Note:-**

\*\* Class 900 to 1500 available on request..

\*\* Casting & Fabricated, Customized designs available.

\*\* "INVACO" reserve rights to change DESIGN anytime without notice.

**GA Drawing for Suction Strainer (Model - 5400)**

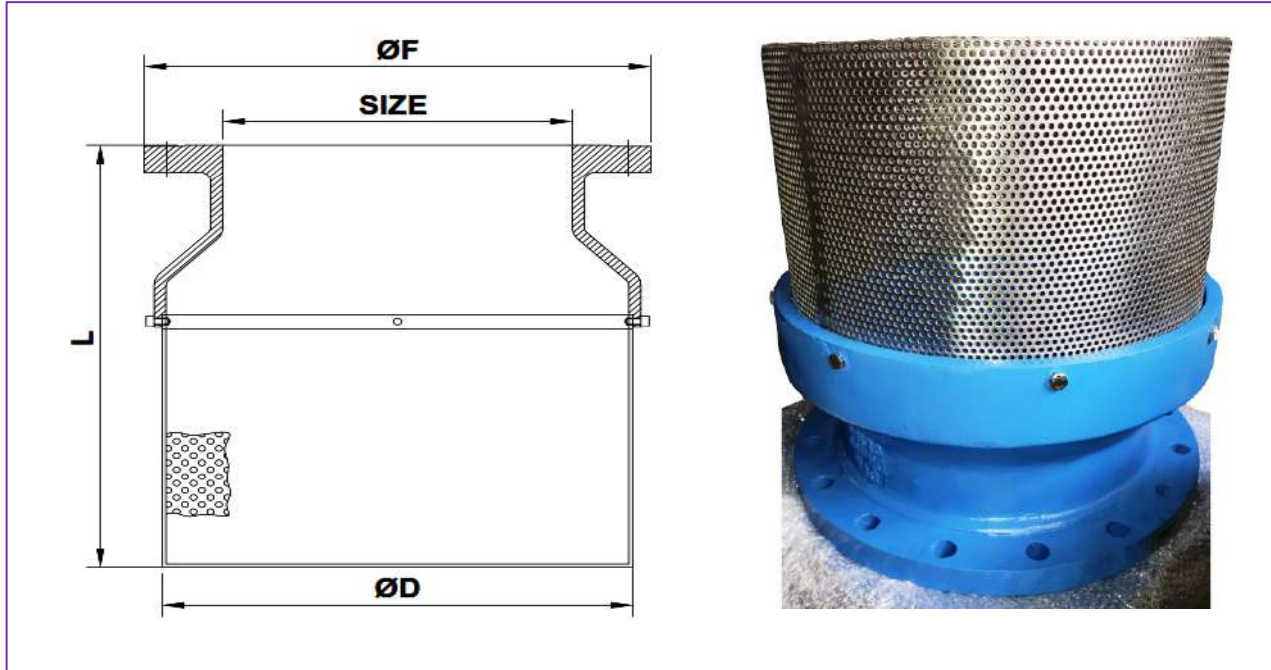


**Material of Construction for Suction Strainer (Model - 5400)**

Bill of Material For Check Valve							
Sr. No.	Part	Carbon Steel	Low Temp. Carbon Steel	Stainless Steel	Duplex	Aluminum Bronze	Nickel Alloys
1	Body	A216 Gr WCB	A325 Gr. LCB , LCC	A351 Gr. CF8M, CF8	A890 Gr. 4A, 5A, 6A	C95800, C95500, C63200	A494 Gr.CW6MC, CW12M, M 35-1
2	Bolt	A193 Gr B7	A320 Gr L7	A193 Gr B8M	A193 Gr B8M CL2		
	Nut	A194 Gr 2H	A194 Gr 7	A194 Gr 8M	A194 Gr 8M CL2		
4	Screen	SS 304 / SS 316			Duplex	Inconel / Monel	

NOTE: \*\* Casting & Fabricated, Customized designs available as per customer requirement.  
 \*\* "INVACO" reserve rights to change MATERIALS & DESIGN anytime without prior notice.

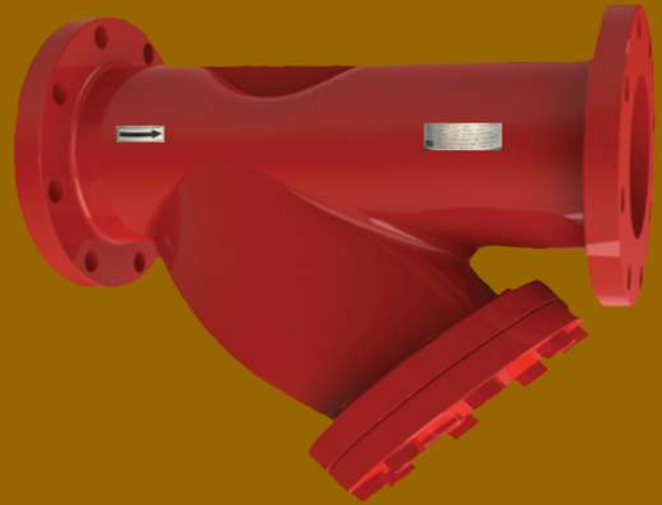
**Dimensions for Suction Strainers (Model - 5400)**



Size		150#		
		L	ØD	ØF
in	mm	mm	mm	mm
2	50	138	95	153
2½	65	145	130	178
3	80	161	145	191
4	100	200	190	229
6	150	272	240	280
8	200	363	290	343
10	250	459	340	407
12	300	485	400	483
14	350	501	450	533
16	400	510	530	597
18	450	624	580	635
20	500	746	630	699
24	600	846	730	813

**Note:-**

- \*\* Class 300 to 1500 available on request.
- \*\* Casting, Customized designs available.
- \*\* "INVACO" reserve rights to change DESIGN anytime without notice.



**Strainers**

Basket Strainer - Model 5300  
"Y" Type Strainer - Model 5200  
Suction Strainer - Model 5400

Web Site:  
[www.invacovalves.com](http://www.invacovalves.com)

Emails:  
[invacovalves@gmail.com](mailto:invacovalves@gmail.com)  
[sandesh@invacovalves.com](mailto:sandesh@invacovalves.com)

Contacts:  
+91 9920 900 311  
+91 9619 010 130

Address:  
Plot No. - F 27  
Additional MIDC Ambernath  
Ambernath (E) - 421 506  
Thane, India

Your Local INVACO Representative -

We are 70 Km away from Mumbai International Airport.